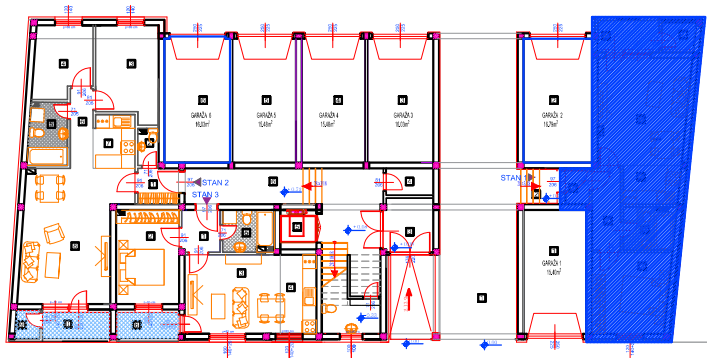


dvorište

Prizemlje  
Stan br. 1

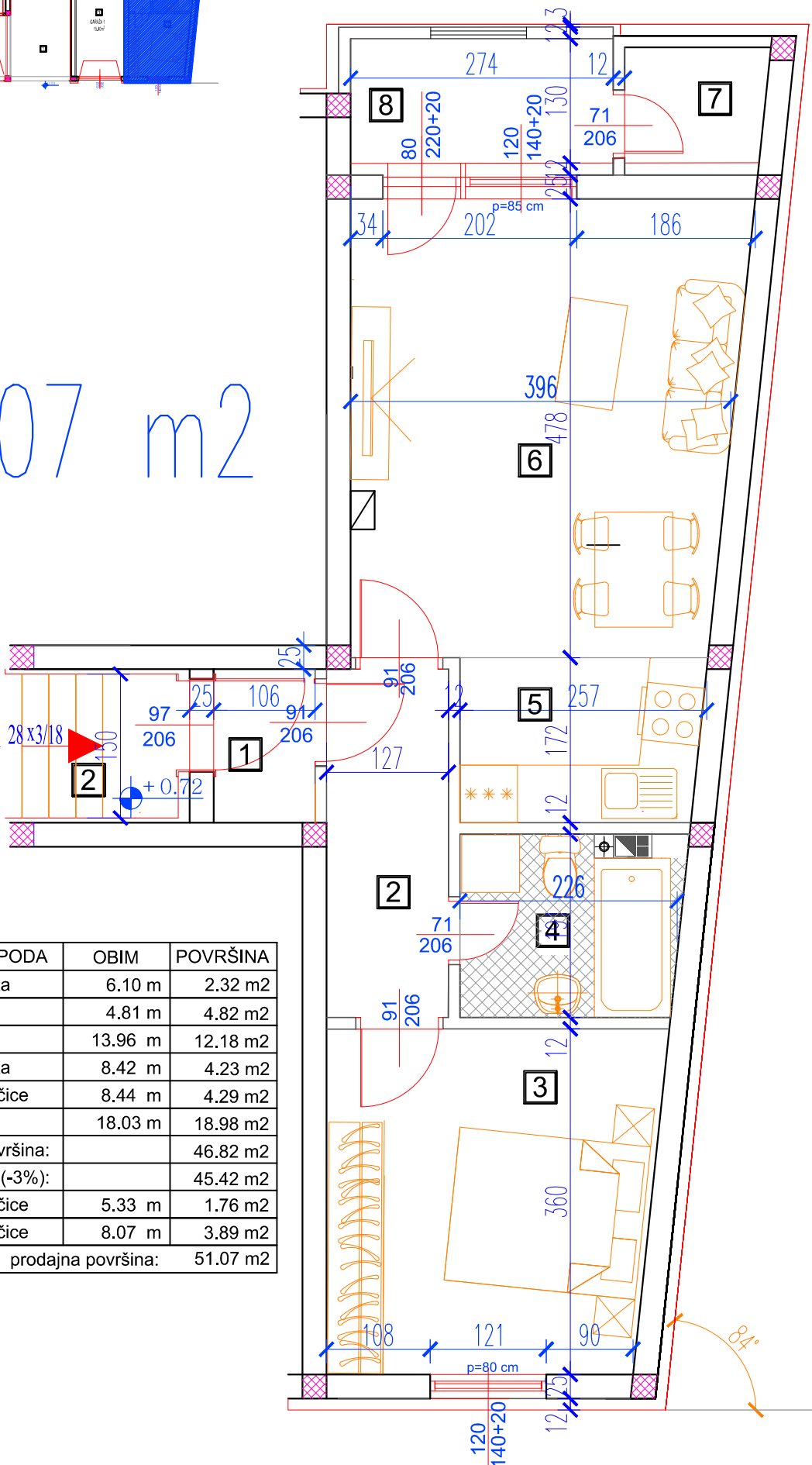
1



ulica

$P = 51,07 \text{ m}^2$

STAN 1



STAN 01

	NAZIV PROSTORIJE	VRSTA PODA	OBIM	POVRŠINA
1	HODNIK	keramika	6.10 m	2.32 m <sup>2</sup>
2	PREDSOBLJE	parket	4.81 m	4.82 m <sup>2</sup>
3	SPAVAČA SOBA	parket	13.96 m	12.18 m <sup>2</sup>
4	KUPATILO	keramika	8.42 m	4.23 m <sup>2</sup>
5	KUHINJA	ker. pločice	8.44 m	4.29 m <sup>2</sup>
6	DNEVNI BORAVAK	parket	18.03 m	18.98 m <sup>2</sup>
		površina:		46.82 m <sup>2</sup>
		redukovana površina (-3%):		45.42 m <sup>2</sup>
7	LOĐA	ker. pločice	5.33 m	1.76 m <sup>2</sup>
8	LOĐA	ker. pločice	8.07 m	3.89 m <sup>2</sup>
		prodajna površina:		51.07 m <sup>2</sup>