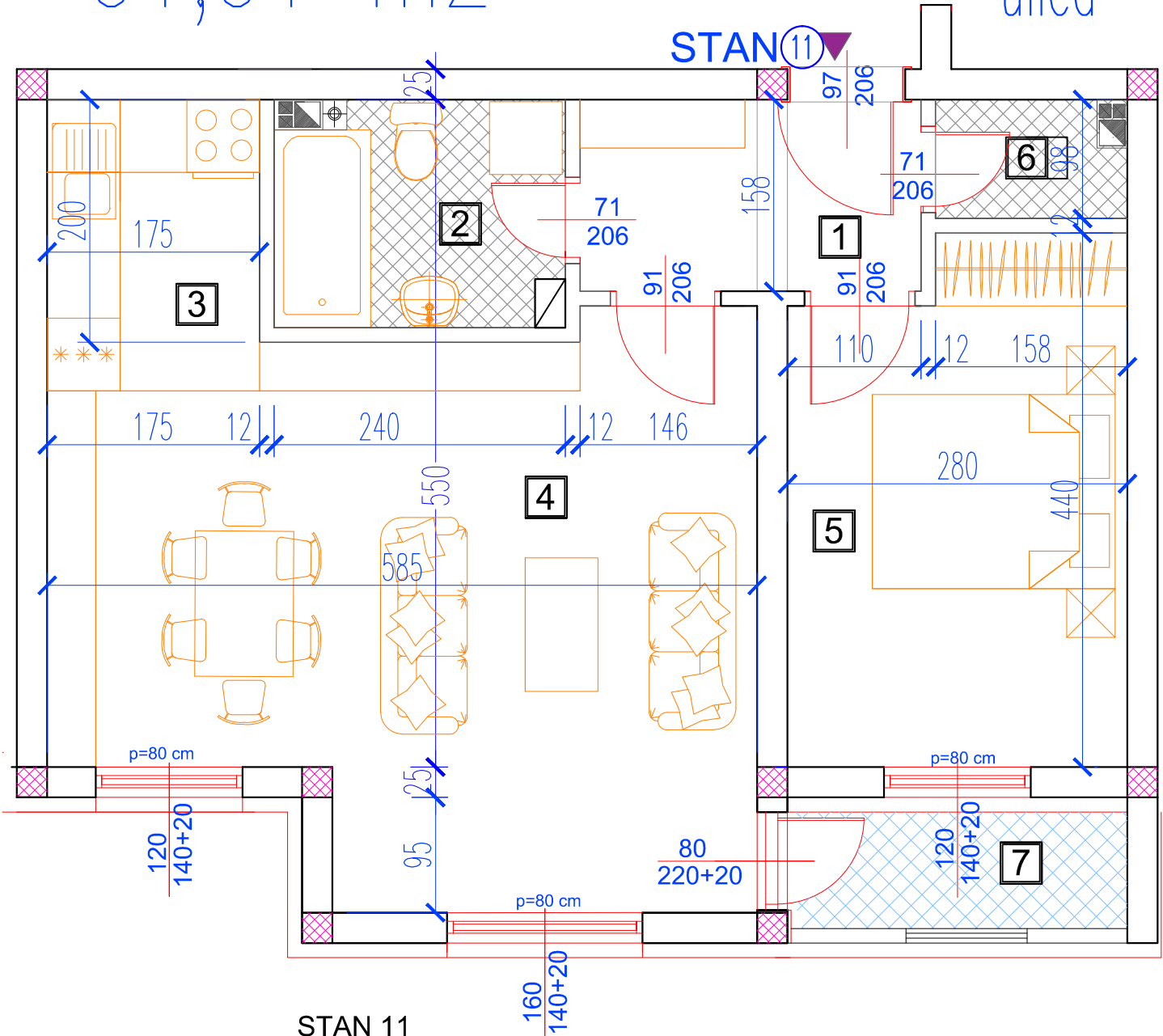
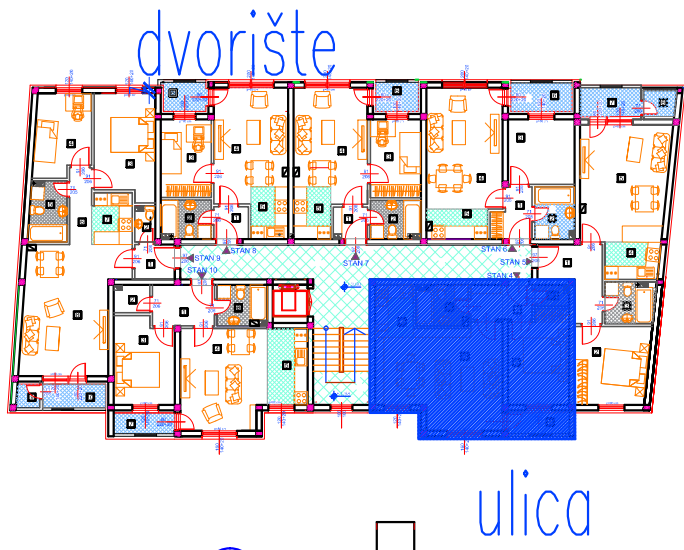


II sprat  
 Stan br. 11  
 P=51,51 m<sup>2</sup>

11



STAN 11

|   | NAZIV PROSTORIJE | VRSTA PODA                 | OBIM    | POVRŠINA             |
|---|------------------|----------------------------|---------|----------------------|
| 1 | HODNIK           | parket                     | 8.78 m  | 4.44 m <sup>2</sup>  |
| 2 | KUPATILO         | keramika                   | 8.55 m  | 4.26 m <sup>2</sup>  |
| 3 | KUHINJA          | keramika                   | 8.30 m  | 4.20 m <sup>2</sup>  |
| 4 | DNEVNA SOBA      | parket                     | 26.69 m | 24.41 m <sup>2</sup> |
| 5 | SOBA             | parket                     | 14.40 m | 11.59 m <sup>2</sup> |
| 6 | OSTAVA           | keramika                   | 5.11 m  | 1.45 m <sup>2</sup>  |
|   |                  | površina:                  |         | 50.35m <sup>2</sup>  |
|   |                  | redukovana površina (-3%): |         | 48.84 m <sup>2</sup> |
| 7 | LOĐA             | ker. pločice               | 5.11 m  | 2.67 m <sup>2</sup>  |
|   |                  | prodajna površina:         |         | 51.51 m <sup>2</sup> |