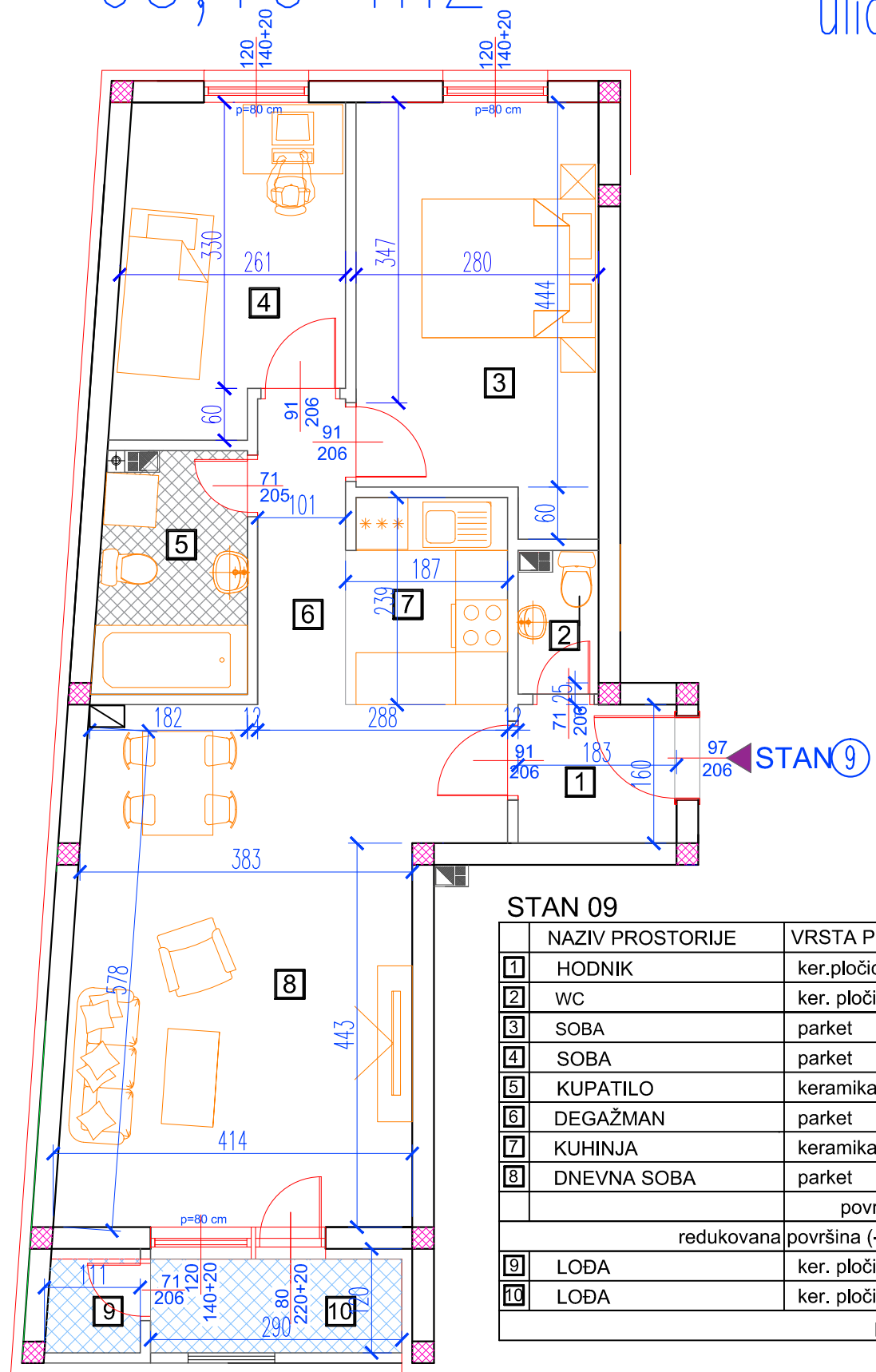
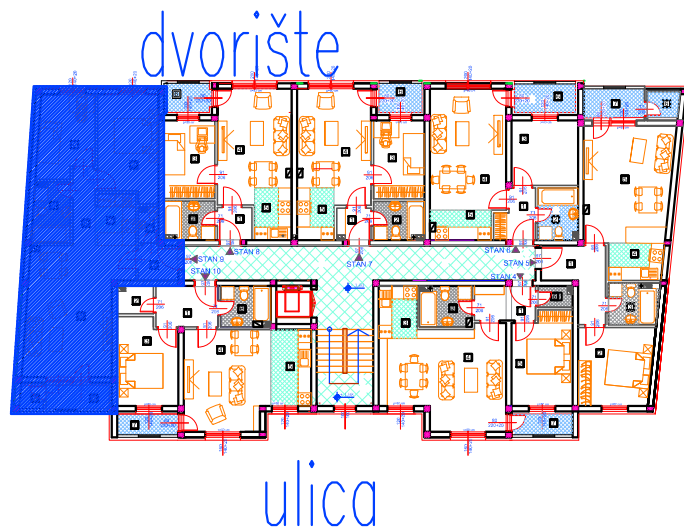


I sprat
 Stan br. 9
 P=63,10 m²



STAN 09

	NAZIV PROSTORIJE	VRSTA PODA	OBIM	POVRŠINA
1	HODNIK	ker.pločice	7.19 m	2.92 m ²
2	WC	ker. pločice	5.17 m	1.44 m ²
3	SOBA	parket	15.68 m	12.99 m ²
4	SOBA	parket	13.01 m	9.47 m ²
5	KUPATILO	keramika	9.07 m	4.72 m ²
6	DEGAŽMAN	parket	9.09 m	3.58 m ²
7	KUHINJA	keramika	8.51 m	4.40 m ²
8	DNEVNA SOBA	parket	22.17 m	21.12 m ²
			površina:	60.64 m ²
			redukovana površina (-3%):	58.82 m ²
9	LOBA	ker. pločice	4.29 m	1.15 m ²
10	LOBA	ker. pločice	7.96 m	3.13 m ²
			prodajna površina:	63.10 m ²