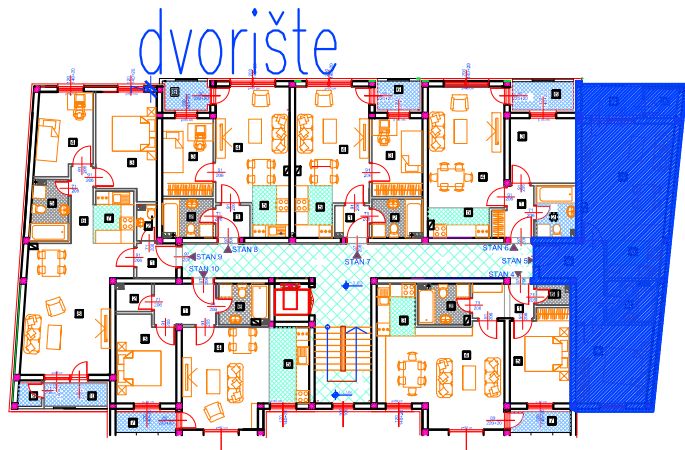
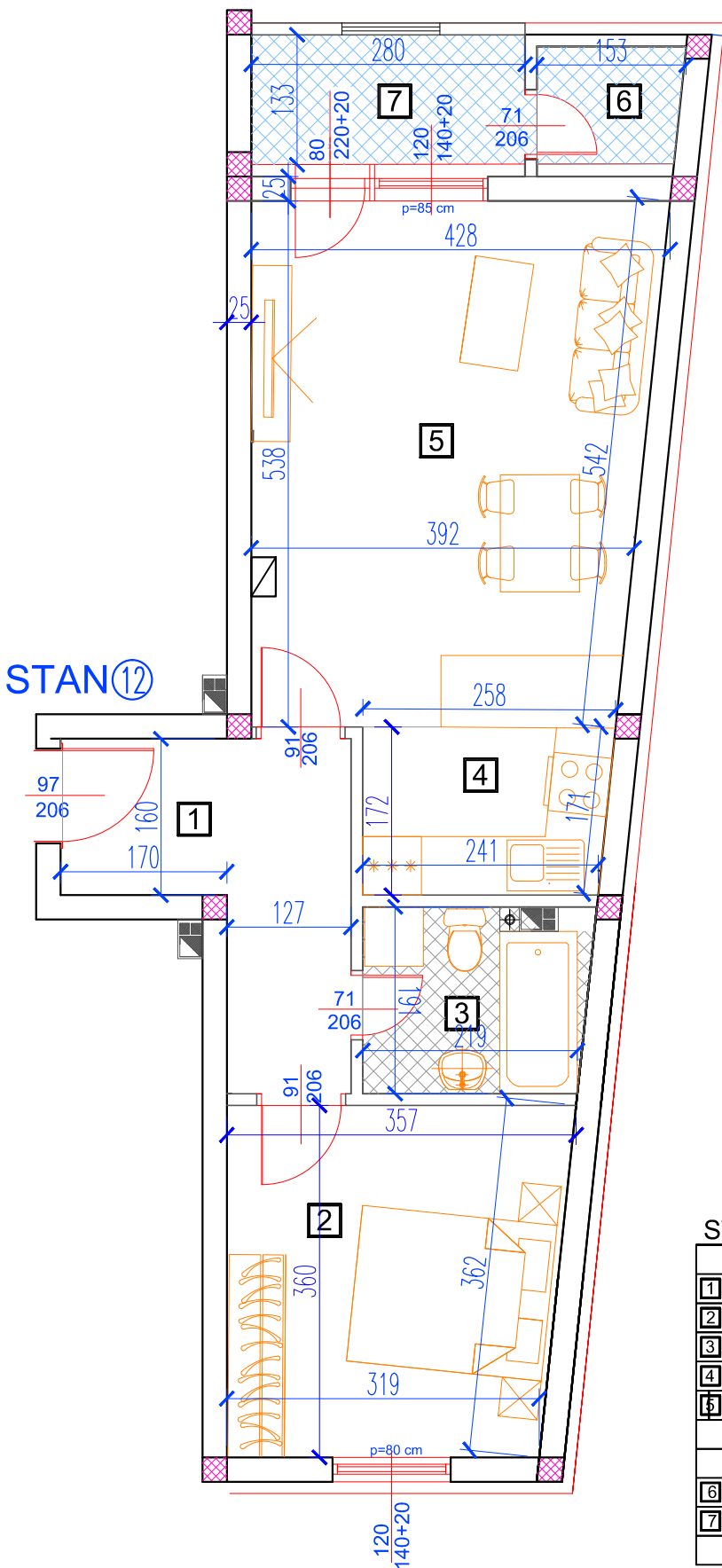


II sprat
Stan br.

12



ulica



P=53,61 m²

STAN 12

	NAZIV PROSTORIJE	VRSTA PODA	OBIM	POVRŠINA
1	HODNIK	parket	13.19 m	7.32 m ²
2	SOBA	parket	13.98 m	12.17 m ²
3	KUPATILO	keramika	8.96 m	4.23 m ²
4	KUHINJA	parket	8.41 m	4.26 m ²
5	DNEVNI BORAVAK	keramika	19.30 m	21.46 m ²
			površina:	49.44 m ²
			redukovana površina (-3%):	47.96 m ²
6	LOBA	ker. pločice	5.58 m	1.94 m ²
7	LOBA	ker. pločice	8.25 m	3.71 m ²
			prodajna površina:	53.61 m ²