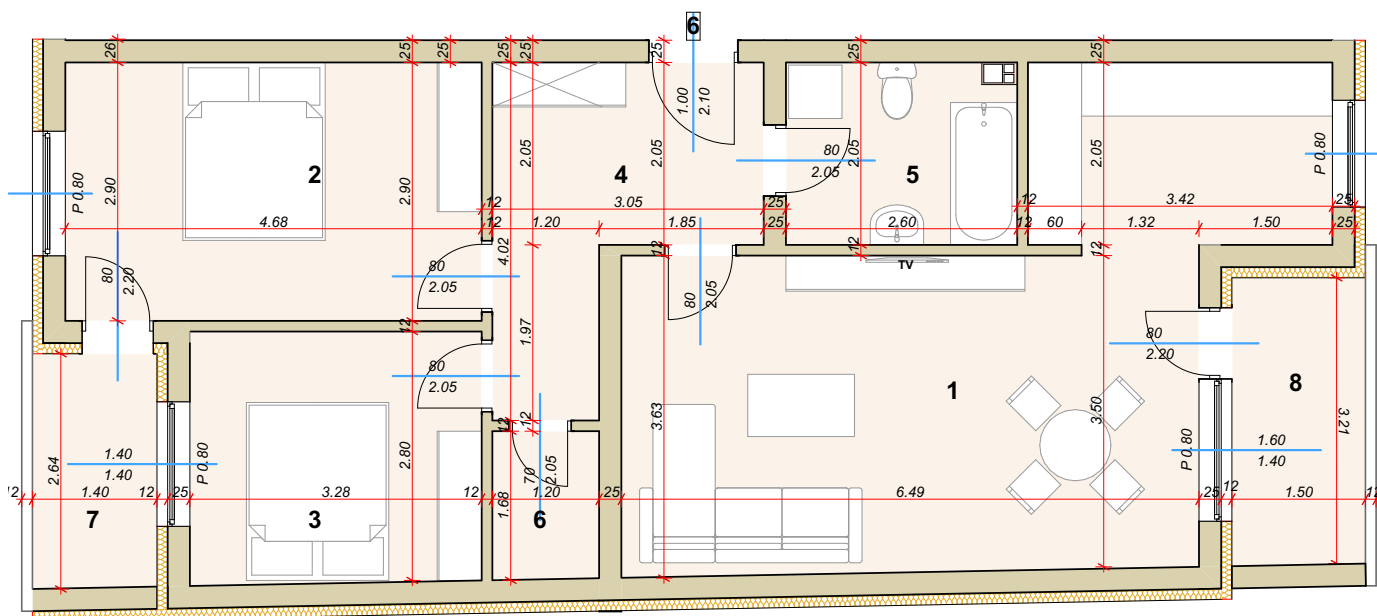
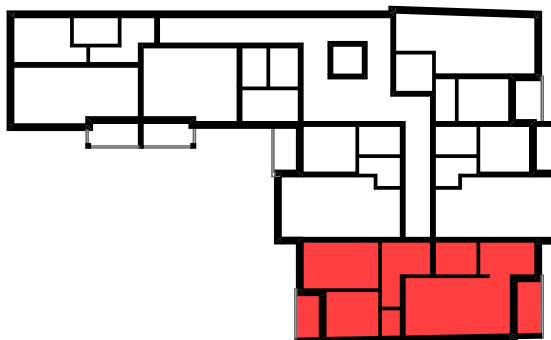


VIŠEPORODIČNA STAMBENO-POSLOVNA ZGRADA P+3  
SUBOTIČKA 13, SOMBOR



STAN BR. 6 - TROSOBAN STAN		
SPRAT I		
	PROSTORIJE	POVRŠ.
1	Dnevna/Kuhinja/trpezarija	30.30 m <sup>2</sup>
2	Soba	13.59 m <sup>2</sup>
3	Soba	9.38 m <sup>2</sup>
4	Hodnik	8.62 m <sup>2</sup>
5	Kupatilo	5.23 m <sup>2</sup>
6	Ostava	2.01 m <sup>2</sup>
7	Terasa	3.68 m <sup>2</sup>
8	Terasa	4.84 m <sup>2</sup>
	<b>UKUPNO</b>	<b>77,68 m<sup>2</sup></b>
		-3% <b>75,35 m<sup>2</sup></b>

**SPRAT I**  
**STAN BR. 6**