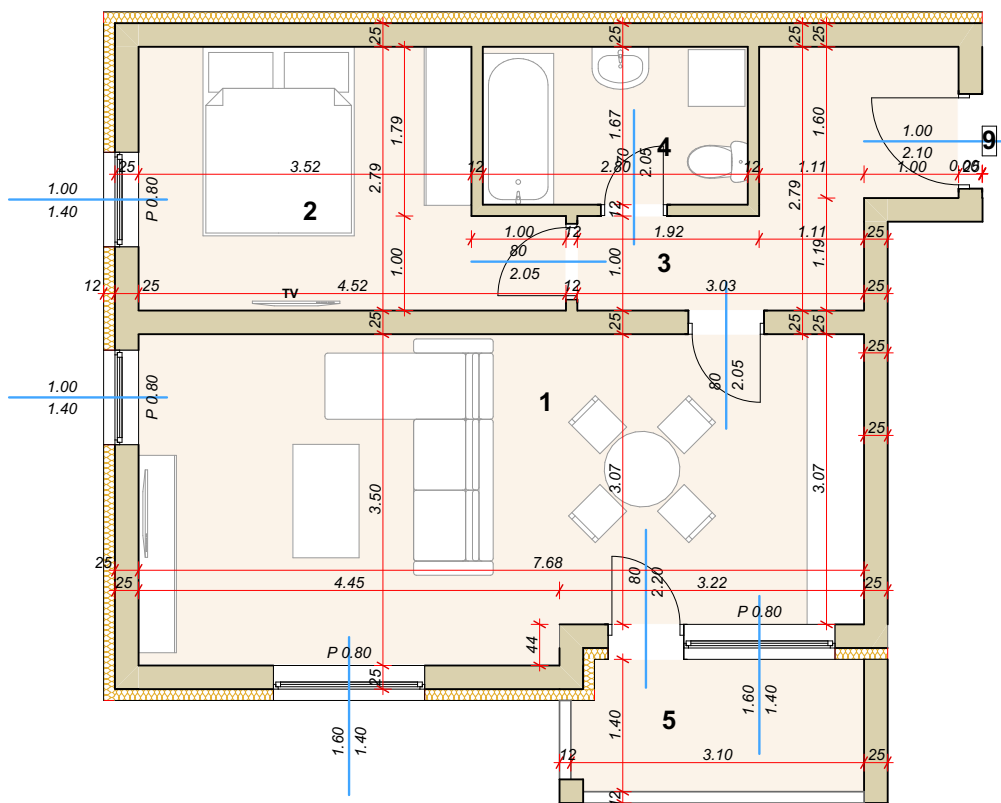
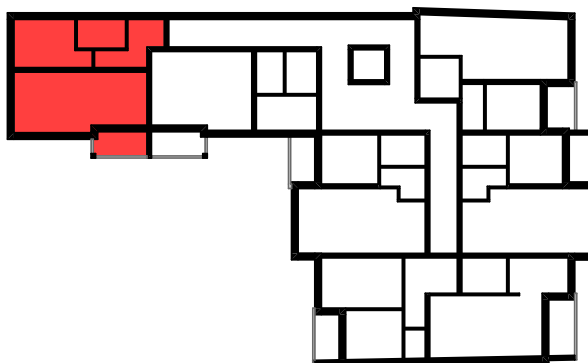


VIŠEPORODIČNA STAMBENO-POSLOVNA ZGRADA P+3
SUBOTIČKA 13, SOMBOR



STAN BR. 9 - DVOSOBAN STAN	
SPRAT I	
PROSTORIJE	POVRŠ.
1 Dnevna/Kuhinja/trpezarija	25.45 m ²
2 Soba	10.83 m ²
3 Hodnik	6.61 m ²
4 Kupatilo	4.68 m ²
5 Terasa	4.22 m ²
UKUPNO	51,79 m²
	-3% 50,24 m²

SPRAT I
STAN BR. 9