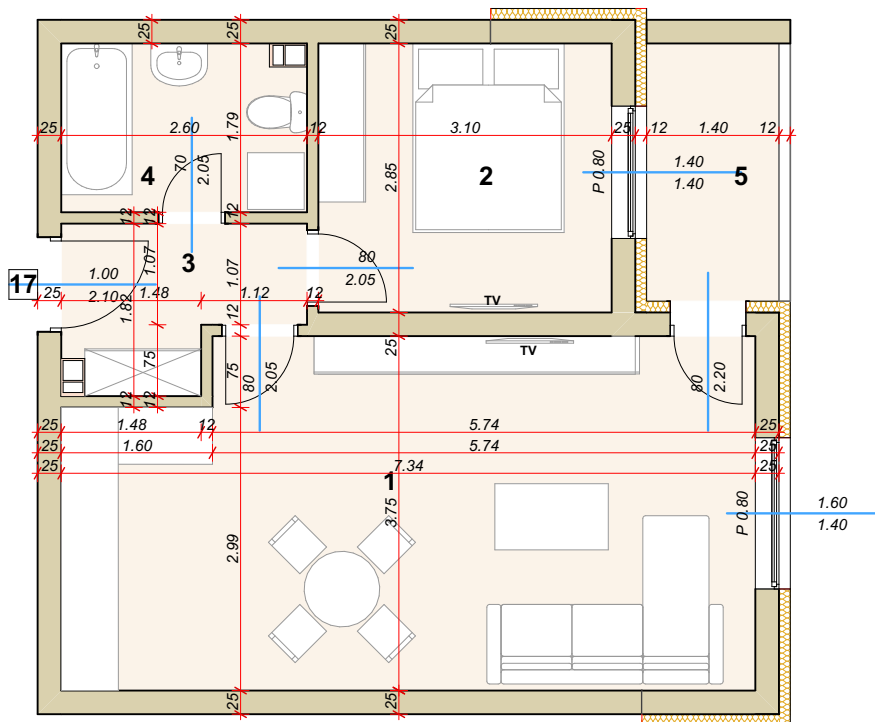
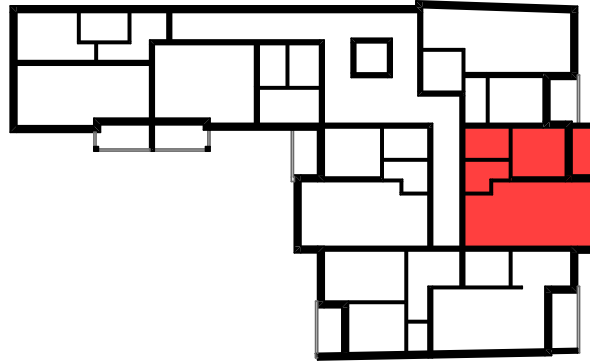


VIŠEPORODIČNA STAMBENO-POSLOVNA ZGRADA P+3
SUBOTIČKA 13, SOMBOR



STAN BR. 17 - JEDNOIPOSOBAN STAN		
SPRAT III		
	PROSTORIJE	POVRŠ.
1	Dnevna/Kuhinja/trpezarija	26.33 m ²
2	Soba	8.83 m ²
3	Hodnik	3.80 m ²
4	Kupatilo	4.54 m ²
5	Terasa	3.82 m ²
	UKUPNO	47,32 m²
	-3%	45,90 m²

SPRAT III
STAN BR. 17